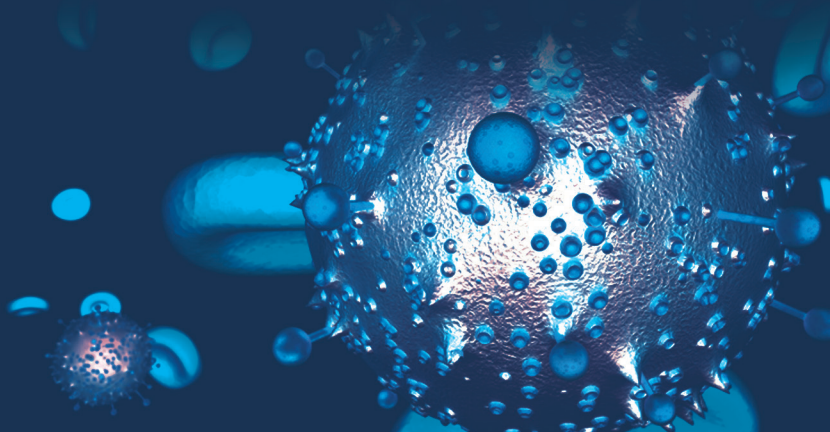
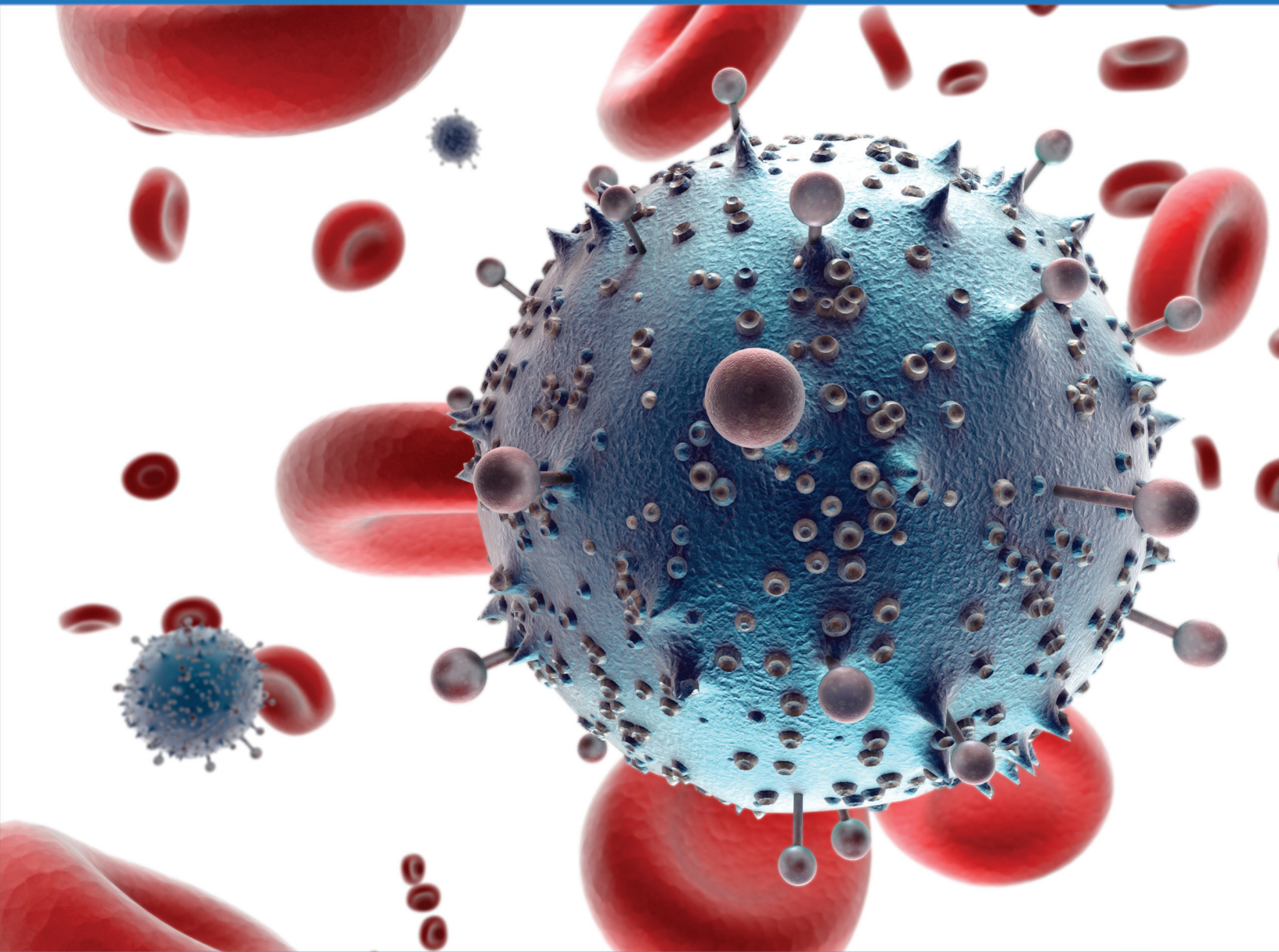




PRICE LIST 2014 - 2015





SibEnzyme Ltd. (Siberian Enzyme, SE) Is a privately owned Russian company founded in 1991 SibEnzyme Ltd. Is located in Academtown near Novosibirsk city-the capital of Siberia and a geographic centre of Russia SibEnzyme's primary focus is production of enzymes and related products for molecular biology, PCR and genetic engineering. SE product line includes more than 200 enzymes, a set of perfect DNA ladders, high quality enzymatic dNTP's and DNA preparations. SibEnzyme Ltd, is one of the leading companies in research, development and production of restriction endonucleases and new DNA endonucleases. A new type of methyl-directed DNA endonucleases has been discovered and characterized in our laboratories. These new enzymes are a good instrument to detect DNA methylation status in epigenetics studies and medical applications. Information about SibEnzyme products may be found at www.sibenzyme.com Scientific publications with detailed study of new enzymes are available at www.science.sibenzyme.com

Cat No.	Enzyme	Prototype	Recognition Sequence	Units	Price
E179	AccB7 I	PflM I	CCANNNN [^] NTGG	200	1750
E180			GGTN [^] NNNNACC	1000	7000
E007	AccBS I	BsrB I	GAG [^] CGG	1000	7000
E008			CTC [^] GCC	5000	28000
E011	Acl I	Acl I	AA [^] CGTT	200	4375
E012			TTGC [^] AA	1000	17500
E211	AclW I	Bin I	GGATC(N) ₄ [^]	100	4375
E212			CCTAG(N) ₅ [^]	500	17500
E499	Aco I	Cfr I	Y [^] GGCCR	100	4375
E500			RCCGG [^] Y	500	17500
E013	Acs I	Apo I	R [^] AATTY	500	5250
E014			YTAA [^] R	2500	21000
E451	Aco I	Eco57 I	CTGAAG(N) ₁₆ [^]	50	1400
E452			GACTTC(N) ₁₄ [^]	250	5600
E213	Afe I	Eco47 III		200	8750
E214			AGC [^] GCT	1000	35000
E214X			TCG [^] CGA	1000	35000
E573	Ags I	Ags I	TTS [^] AA	200	8750
E574			AA [^] STT	1000	35000
E173	Ahl I	Spe I	A [^] CTAGT	1000	13125
E174			TGATC [^] A	5000	52500
E473	Ajn I	EcoR II	[^] CCWGG	200	7875
E474			GGWCC [^]	1000	31500
E015	Alu I	Alu I	AG [^] CT	200	2625
E016			TC [^] GA	1000	10500
E549	AluB I	Alu I	AG [^] CT	200	2625
E550			TC [^] GA	1000	10500
E017	Ama87 I	Ava I	C [^] YCGRG	1000	4375
E018			GRGCY [^] C	5000	17500
E019	Apa I	Apa I	GGGCC [^] C	1000	1750
E020			C [^] CCGGG	5000	7000

Cat No.	Enzyme	Prototype	Recognition Sequence	Units	Price
E575	Ars I	Ars I	$\wedge(N)_8GAC(N)_6TTYG(N)_{11}\wedge$	50	4,375
E576			$\wedge(N)_{13}CTG(N)_6AARC(N)_6\wedge$	250	17,500
E235	AsiG I	Age I	A \wedge CCGGT	100	4,375
E236			TGGCC \wedge A	500	17,500
E245	AspA2 I	Avr II	C \wedge CTAGG	500	7,000
E246			GGATC \wedge C	2500	28,000
E221	AspLE I	Hha I	GCG \wedge C	500	1,750
E222			C \wedge GCG	2500	7,000
E117	AspS9 I	Sau96 I	G \wedge GNCC	1000	3,500
E118			CCNG \wedge G	5000	14,000
E257	AsuC2 I	Cau II	CC \wedge SGG	2000	4,375
E258			GG \wedge CC	10000	17,500
E231	AsuHP I	Hph I	GGTGA(N) $_8\wedge$	200	4,375
E232			CCACT(N) $_7\wedge$	1000	17,500
E063	AsuNH I	Nhe I	G \wedge CTAGC	1000	7,875
E064			CGATC \wedge G	5000	31,500
E021	BamH I	BamH I		4000	2,625
E022				20000	10,500
E021X			G \wedge GATCC	4000	2,625
E022X			CCTAG \wedge G	20000	10,500
E547	Bar I	Bar I	$\wedge(N)_7GAAG(N)_6TAC(N)_{12}\wedge$	100	8,750
E548			$\wedge(N)_{12}CTTC(N)_6ATG(N)_7\wedge$	500	35,000
E023	Bbv12 I	HgiA I	GWGCW \wedge C	200	1,750
E024			C \wedge WCGWG	1000	7,000
E025	Bgl I	Bgl I	GCCNNNN \wedge NGGC	500	2,625
E026			CGGN \wedge NNNNCCG	2500	10,500
E027	Bgl II	Bgl II	A \wedge GATCT	1000	4,375
E028			TCTAG \wedge A	5000	17,500
E029	Bme18 I	Ava II	G \wedge GWCC	1000	3,500
E030			CCWG \wedge G	5000	14,000
E457	Bmt I	Nhe I	GCTAG \wedge C	1000	24,500
E458			C \wedge GATCG	5000	98,000

Cat No.	Enzyme	Prototype	Recognition Sequence	Units	Price
E468			GACCTC(N) ₁₄ ^	250	21,000
E149	Bpu10 I	Bpu10 I	CC^TNAGC	200	8,750
E150			GGANT^CG	1000	35,000
E033	Bpu14 I	Asu II	TT^CGAA	1000	2,100
E034			AAGC^TT	5000	8,400
E205	Bsa29 I	Cla I	AT^CGAT	1000	5,250
E206			TAGC^TA	5000	21,000
E219	Bsc4 I	BsiY I	CCNNNNN^NNGG	500	5,250
E220			GGNN^NNNNNCC	2500	21,000
E035	Bse1 I	Bsr I	ACTGGN^	1000	5,250
E036			TGAC^CN	5000	21,000
E039	Bse118 I	Cfr10 I	R^CCGGY	200	2,625
E040			YGGCC^R	1000	10,500
E037	Bse21 I	Sau I	CC^TNAGG	500	3,500
E038			GGANT^CC	2500	14,000
E253	Bse3D I	BsrD I	GCAATGNN^	500	10,500
E254			CGTTAC^NN	2500	42,000
E147	Bse8 I	BsaB I	GATNN^NNATC	1000	4,375
E148			CTANN^NNTAG	5000	17,500
E181	BseP I	BseP I	G^CGCGC	200	6,125
E182			CGCGC^G	1000	24,500
E263	BseX3 I	Xma III	C^GGCCG	200	3,500
E264			GCCGG^C	1000	14,000
E479	BslF I	Fin I	GGGAC(N) ₁₀ ^	100	7,000
E480			CCCTG(N) ₁₄ ^	500	28,000
E285	Bso31I	Eco31I	GGTTCN^	200	1,750
E286			CCAGAG(N) ₅ ^	1000	7,000
E183	Bsp13 I	BspM II	T^CCGGA	1000	5,250
E184			AGGCC^T	5000	21,000

Cat No.	Enzyme	Prototype	Recognition Sequence	Units	Price
E185	Bsp1720 I	Esp I	GC [^] TNAGC	500	7,000
E186			CGANT [^] CG	2500	28,000
E047	Bsp19 I	Nco I	C [^] CATGG	1000	8,750
E048			GGTAC [^] C	5000	35,000
E501	BspAC I	Aci I	C [^] CGC	200	8,750
E502			GGC [^] G	1000	35,000
E557	BspFN I	FnuD II	CG [^] CG	500	4,375
E558			GC [^] GC	2500	17,500
E273	BssEC I	Sec I	C [^] CNNGG	200	4,375
E274			GGNNC [^] C	1000	17,500
E261	BssNA I	Sna I	GTA [^] TAC	1000	8,750
E262			CAT [^] ATG	5000	35,000
E207	BssT1 I	Sty I	C [^] CWWGG	1000	1,050
E208			GGWWC [^] C	5000	4,200
E043	Bst2B I	Bsi I	C [^] TCGTG	200	5,250
E044			GAGCA [^] C	1000	21,000
E051	Bst2U I	BstN I	CC [^] WGG	1000	1,225
E052			GGW [^] CC	5000	4,900
E265	Bst4C I	Tsp4C I	ACN [^] GT	500	8,750
E266			TG [^] NCA	2500	35,000
E239	Bst6 I	Ksp632 I	CTCTTCN [^]	200	3,500
E240			GAGAAG(N) ₄ [^]	1000	14,000
E093	BstAC I	Acy I	GR [^] CGYC	500	3,500
E094			CYGC [^] RG	2500	14,000
E135	BstAF I	Afl II	C [^] TTAAG	1000	1,750
E136			GAATT [^] C	5000	7,000
E259	BstAP I	(ApaB I)	GCANNNN [^] NTGC	200	8,750
E260			CGTN [^] NNNNACG	1000	35,000
E267	BstAU I	Bsp1407 I	T [^] GTACA	1000	8,750
E268			ACATG [^] T	5000	35,000
E237	BstBA I	BsaA I	YAC [^] GTR	500	7,000
E238			RTG [^] CAY	2500	28,000

Cat No.	Enzyme	Prototype	Recognition Sequence	Units	Price
E305	BstC8 I	Cac8 I	GCN [^] NGC	500	8750
E306			CGN [^] NCG	2500	35000
E227	BstDE I	Dde I	C [^] TNAG	500	4375
E228			GANT [^] C	2500	17500
E083	BstDS I	Dsa I	C [^] CRYGG	1000	7000
E084			GGYRC [^] C	5000	28000
E103	BstEN I	EcoN I	CCTNN [^] NNNAGG	200	1750
E104			GGANNN [^] NNTCC	1000	7000
E031	BstF5 I	(Fok I)	GGATGNN [^]	500	3500
E032			CCTAC [^] NN	2500	14000
E283	BstFN I	FnuD II	CG [^] CG	300	2625
E284			GC [^] GC	1500	10500
E171	BstH2 I	Hae II	RGCGC [^] Y	500	1750
E172			Y [^] CGCGR	2500	7000
E143	BstHH I	Hha I	GCG [^] C	2000	2625
E144			C [^] GCG	10000	10500
E151	BstKT I	Mbo I	GAT [^] C	200	8750
E152			C [^] TAG	1000	35000
E291	BstMA I	BsmA I	GTCTCN [^]	2000	8750
E292			CAGAG(N) ₅ [^]	10000	35000
E119	BstMB I	Mbo I	[^] GATC	200	3500
E120			CTAG [^]	1000	14000
E071	BstMC I	Mcr I	CGRY [^] CG	500	3500
E072			GC [^] YRGC	2500	14000
E459	BstMW I	Mwo I	GCNNNNN [^] NNGC	500	10500
E460			CGNN [^] NNNNNCG	2500	42000
E251	BstNS I	Nsp I	RCATG [^] Y	200	6125
E252			Y [^] GTACR	1000	24500
E299	BstPA I	PshA I	GACNN [^] NNGTC	1000	8750
E300			CTGNN [^] NNCAG	5000	35000
E307	BstSC I	ScrF I	[^] CCNGG	100	4375
E308			GGNCC [^]	500	17500

Cat No.	Enzyme	Prototype	Recognition Sequence	Units	Price
E197	BstSF I	Sfe I	C^TRYAG	200	6125
E198			GAYRT^C	1000	24500
E561	BstSL I	BseS I	GKGCM^C	500	7000
E562			C^MCGKG	2500	28000
E065	BstSN I	SnaB I	TAC^GTA	200	3500
E066			ATG^CAT	1000	14000
E303	BstV1 I	Bbv I	GCAGC(N) ₈ ^	100	6125
E304			CGTCG(N) ₁₂ ^	500	24500
E297	BstV2 I	Bbv II	GAAGAC(N) ₂ ^	200	3500
E298			CTTCTG(N) ₆ ^	1000	14000
E465	BstX I	BstX I	CCANNNNN^NTGG	200	1750
E466			GGTN^NNNNNACC	1000	7000
E229	BstX2 I	Xho II	R^GATCY	500	4375
E230			YCTAG^R	2500	17500
E581	Bsu I	BciV I	GTATCCNNNNNN^	200	8750
E582			CATAGGNNNNNN^	1000	35000
E053	BsuR I	Hae III	GG^CC	1000	875
E054			CC^GG	5000	3500
E277	Btr I	Btr I	CAC^GTC	100	3500
E278			GTG^CAG	500	14000
E565	Cci I	BspH I	T^CATGA	1000	8750
E566			AGTAC^T	5000	35000
E203	CciN I	Not I	GC^GGCCGC	200	3500
E204			CGCCGG^CG	1000	14000
E055	Dra I	Aha III	TTT^AAA	1000	1750
E056			AAA^TTT	5000	7000
E309	Dra III	Dra III	CACNNN^GTG	500	4375
E310			GTG^NNNCAC	2500	17500
E193	Dri I	Eam1105 I	GACNNN^NNGTC	200	1750
E194			CTGNN^NNNCAG	1000	7000
E241	DseD I	Drd I	GACNNNN^NNGTC	500	14000
E242			CTGNN^NNNNCAG	2500	56000

Cat No.	Enzyme	Prototype	Recognition Sequence	Units	Price
E469	EcoICR I	Sac I	GAG^CTC	200	1225
E470			CTC^GAG	1000	4900
E057	EcoR I	EcoR I		5000	1750
E058				25000	7000
E057X			G^AATTC	5000	1750
E058X			CTTAA^G	25000	7000
E059	EcoR V	EcoR V	GAT^ATC	2000	3500
E060			CTA^TAG	10000	14000
E243	Ege I	Nar I	GGC^GCC	200	5250
E244			CCG^CGG	1000	21000
E061	Erh I	Sty I	C^CWWGG	1000	1050
E062			GGWWC^C	5000	4200
E495	Fae I	Nla III	CATG^	50	3500
E496			^GTAC	250	14000
E551	Fai I	Fai I	YA^TR	50	14000
E552			RT^AY	250	56000
E153	Fal I	Fal I	^(N) ₈ AAGNNNNNCTT(N) ₁₃ ^	100	7000
E154			^(N) ₁₃ TTCNNNNNGAA(N) ₈ ^	500	28000
E155	Fat I	Nla III	^CATG	100	7000
E156			GTAC^	500	28000
E209	Fau I	Fau I	CCCGC(N) ₄ ^	100	7000
E210			GGGCG(N) ₆ ^	500	28000
E009	FauND I	Nde I	CA^TATG	1000	1750
E010			GTAT^AC	5000	7000
E271	Fbl I	Acc I	GT^MKAC	100	1750
E272			CAKM^TG	500	7000
E247	Fok I	Fok I	GGATG(N) ₉ ^	100	875
E248			CCTAC(N) ₁₃ ^	500	3500
E157	FriO I	Ban II	GRGCY^C	1000	4375
E158			C^YCGRG	5000	17500
E095	Fsp4H I	Fnu4H I	GC^NGC	100	3500
E096			CGN^CG	500	14000
E563	Gsa I	BseY I	CCCAG^C	1000	8750
E564			G^GGTCG	5000	35000

Cat No.	Enzyme	Prototype	Recognition Sequence	Units	Price
E067	Hae III	Hae III		2000	3000
E068			GG^CC	10000	12000
E068X			CC^GG	10000	12000
E461	Hga I	Hga I	GACGC(N) ₅ ^	50	4375
E462			CTGCG(N) ₁₀ ^	250	17500
E201	Hind II	Hind II	GTY^RAC	1000	5250
E202			CAR^YTG	5000	21000
E073	Hind III	Hind III		5000	1750
E074				25000	7000
E073X			A^AGCTT	5000	1750
E074X			TTCGA^A	25000	7000
E075	Hinf I	Hinf I		2000	1750
E076				10000	7000
E075X			G^ANTC	2000	1750
E076X			CTNA^G	10000	7000
E077	Hpa I	Hpa I	GTT^AAC	500	2625
E078			CAA^TTG	2500	10500
E161	Hpa II	Hpa II	C^CGG	500	1225
E162			GGC^C	2500	4900
E583	HpySE526 I	Mae II	A^CGT	200	3500
E584			TGC^A	1000	14000
E069	HspA I	(Hha I)	G^CGC	1000	2625
E070			CGC^G	5000	10500
E079	Kpn I	Kpn I		2000	2625
E080				10000	10500
E079X			GGTAC^C	2000	2625
E080X			C^CATGG	10000	10500
E081	Ksp22 I	Bcl I	T^GATCA	1000	1750
E082			ACTAG^T	5000	7000
E187	Kzo9 I	Mbo I	^GATC	200	4375
E188			CTAG^	1000	17500
E121	Mab I	SexA I	A^CCWGGT	200	5250
E122			TGGWCC^A	1000	21000
E471	Mbo II	Mbo II	GAAGA(N) ₈ ^	200	4375
E472			CTTCT(N) ₇ ^	1000	17500

Cat No.	Enzyme	Prototype	Recognition Sequence	Units	Price
E049	Mhl I	Sdu I	GDGCH [^] C	500	6125
E050			C [^] HCGDG	2500	24500
E085	Mlu I	Mlu I	A [^] CGCGT	1000	3500
E086			TGCGC [^] A	5000	14000
E189	Mly113 I	Nar I	GG [^] CGCC	200	5250
E190			CCGC [^] GG	1000	21000
E481	Mnl I	Mnl I	CCTC(N) ₇ [^]	500	7000
E482			GGAG(N) ₆ [^]	2500	28000
E087	MroN I	(Nae I)	G [^] CCGGC	500	4375
E088			CGGCC [^] G	2500	17500
E249	MroX I	Xmn I	GAANN [^] NNTTC	200	1750
E250			CTTNN [^] NNAAG	1000	7000
E091	Msp I	Hpa II	C [^] CGG	1000	1750
E092			GGC [^] C	5000	7000
E301	Msp20 I	Bal I	TGG [^] CCA	100	3500
E302			ACC [^] GGT	500	14000
E191	MspA1 I	NspB II	CMG [^] CKG	500	4375
E192			GKC [^] GMC	2500	17500
E175	MspR9 I	ScrF I	CC [^] NGG	1000	8750
E176			GGN [^] CC	5000	35000
E099	Nru I	Nru I	TCG [^] CGA	500	4375
E100			AGC [^] GCT	2500	17500
E483	PalA I	Asc I	GG [^] CGCGCC	100	2625
E484			CCGCGC [^] GG	500	10500
E105	Pce I	Stu I	AGG [^] CCT	1000	2625
E106			TCC [^] GGA	5000	10500
E275	Pci I	BspLU11 I	A [^] CATGT	300	7875
E276			TGTAC [^] A	1500	31500
E497	PciS I	Sap I	GCTCTTCN [^]	50	8750
E498			CGAGAAG(N) ₄ [^]	250	35000
E045	Pct I	Bsm I	GAATGCN [^]	1000	8750
E046			CTTAC [^] GN	5000	35000
E195	Ple19 I	Pvu I	CGAT [^] CG	100	2625
E196			GC [^] TAGC	500	10500

Cat No.	Enzyme	Prototype	Recognition Sequence	Units	Price
E269	Pps I	Ple I	GAGTC(N) ₄ ^	25	2625
E270			CTCAG(N) ₅ ^	125	10500
E279	Psi I	Psi I	TTA^TAA	200	6125
E280			AAT^ATT	1000	24500
E107	Psp124B I	Sac I	GAGCT^C	1000	3500
E108			C^TCGAG	5000	14000
E453	Psp6 I	EcoR II	^CCWGG	100	3500
E454			GGWCC^	500	14000
E475	PspC I	PmaC I	CAC^GTG	2000	2625
E476			GTG^CAC	10000	10500
E169	PspE I	BstE II	G^GTNACC	2000	5250
E170			CCANTG^G	10000	21000
E223	PspL I	Spl I	C^GTACG	200	7000
E224			GCATG^C	1000	28000
E089	PspN4 I	Nla IV	GGN^NCC	1000	8750
E090			CCN^NGG	5000	35000
E215	PspOM I	(Apa I)	G^GGCCC	1500	3500
E216			CCCGG^G	7500	14000
E255	PspPP I	PpuM I	RG^GWCCY	100	1750
E256			YCCWG^GR	500	7000
E477	PspX I	PspX I		200	8750
E478			VC^TCGAGB	1000	35000
E478X			BGAGCT^CV	1000	35000
E131	Psr I	Psr I	^(N) ₇ GAACNNNNNTAC(N) ₁₂ ^	100	8750
E132			^(N) ₁₂ CTTGNNNNNNATG(N) ₇ ^	500	35000
E109	Pst I	Pst I		4000	2625
E110				20000	10500
E109X			CTGCA^G	4000	2625
E110X			G^ACGTC	20000	10500
E571	PstN I	AlwN I	CAGNNN^CTG	500	8750
E572			GTC^NNGAC	2500	35000
E111	Pvu II	Pvu II	CAG^CTG	2000	2625
E112			GTC^GAC	10000	10500
E491	Rga I	Sgf I	GCGAT^CGC	200	2625
E492			CGC^TAGCG	1000	10500

Cat No.	Enzyme	Prototype	Recognition Sequence	Units	Price
E529	Rig I	Fse I	GGCCGG [^] CC	100	10500
E530			CC [^] GGCCGG	500	42000
E113	Rsa I	Rsa I	GT [^] AC	1000	5250
E114			CA [^] TG	5000	21000
E555	RsaN I	Rsa I	G [^] TAC	200	3500
E556			CAT [^] G	1000	14000
E281	Rsr2 I	Rsr II	CG [^] GWCCG	1000	21000
E282			GCCWG [^] GC	5000	84000
E115	Sal I	Sal I	G [^] TCGAC	2000	5250
E116			CAGCT [^] G	10000	21000
E101	Sbf I	Sse8387 I	CCTGCA [^] GG	200	5250
E102			GG [^] ACGTCC	1000	21000
E537	Set I	Set I		200	8750
E538			ASST [^]	1000	35000
E538X			[^] TSSA	1000	35000
E165	SfaN I	SfaN I	GCATC(N) ₅ [^]	500	10500
E166			CGTAG(N) ₉ [^]	2500	42000
E123	Sfi I	Sfi I		1000	4375
E124				5000	17500
E123X			GGCCNNNN [^] NGGCC	1000	4375
E124X			CCGGN [^] NNNNCCGG	5000	17500
E125	Sfr274 I	Xho I	C [^] TCGAG	2000	2625
E126			GAGCT [^] C	10000	10500
E127	Sfr303 I	Sac II	CCGC [^] GG	1000	2625
E128			GG [^] CGCC	5000	10500
E177	Sma I	Sma I	CCC [^] GGG	2000	5250
E178			GGG [^] CCC	10000	21000
E225	Smi I	Swa I	ATTT [^] AAAT	1000	4375
E226			TAAA [^] TTTA	5000	17500
E293	SmiM I	Msl I	CAYNN [^] NNRTG	500	8750
E294			GTRNN [^] NNYAC	2500	35000
E129	Sph I	Sph I	GCATG [^] C	500	7000
E130			C [^] GTACG	2500	28000
E217	Sse9 I	Tsp509 I	[^] AATT	500	3500
E218			TTAA [^]	2500	14000

Cat No.	Enzyme	Prototype	Recognition Sequence	Units	Price
E041	Ssp I	Ssp I	AAT [^] ATT	500	4375
E042			TTA [^] TAA	2500	17500
E133	Taq I	Taq I	T [^] CGA	2000	1875
E134			AGC [^] T	10000	7500
E199	Tru9 I	Mse I	T [^] TAA	500	7000
E200			AAT [^] T	2500	28000
E097	Tth111 I	Tth111 I	GACN [^] NNGTC	400	3500
E098			CTGNN [^] NCAG	2000	14000
E137	Vne I	ApaL I	G [^] TGCAC	1000	3500
E138			CACGT [^] G	5000	14000
E139	Vsp I	Vsp I	AT [^] TAAT	1000	1750
E140			TAAT [^] TA	5000	7000
E141	Xba I	Xba I		2000	2625
E142				10000	10500
E141X			T [^] CTAGA	2000	2625
E142X			AGATC [^] T	10000	10500
E233	Xma I	Xma I	C [^] CCGGG	300	7000
E234			GGGCC [^] C	1500	28000
E463	Zra I	(Aat II)	GAC [^] GTC	200	8750
E464			CTG [^] CAG	1000	35000
E005	Zrm I	Sca I	AGT [^] ACT	1000	4375
E006			TCA [^] TGA	5000	17500
E145	Zsp2 I	Nsi I	ATGCA [^] T	1000	5250
E146			T [^] ACGTA	5000	21000

Cat No.	Enzyme	Units	Price
E327	Alkaline Phosphatase	100	1750
E328		500	7000
E365	Thermolabile Alkalane Phosphatase	200	1750
E366		1000	7000
E311	T4Polynucleotidekinase	500	4375
E312		2500	17500
E319	T4 DNA Ligase	10000	1750
E320		50000	7000
E329	Concentrated T4 DNA Ligase, (2 000 000 units/ml)	50000	7000
E330		250000	28000

Cat No.	Enzyme	Units	Price
K006	DNA Quick Ligation Kit	20 rxns	10500
E349	T4 RNA Ligase	1000	5250
E350		5000	21000
E325	DNA Polymerase I E.coli, (Klenow fragment)	200	4375
E326		1000	17500
E337	Taq DNA Polymerase with AS Buffer	200	1400
E338		1000	5600
E331	Taq DNA Polymerase with Standard Taq Buffer	200	1400
E332		1000	5600
E341	Taq DNA Polymerase with Standard Taq Buffer (Mg free)	200	1400
E342		1000	5600
E313	Taq SE DNA Polymerase	200	2625
E314		1000	10500
E351	Hot Start Taq DNA Polymerase	200	8750
E352		1000	35000
E353	Pfu DNA Polymerase	200	8750
E354		1000	35000
E339	T4 DNA Polymerase	200	8750
E340		1000	35000
E317	M-MulV Reverse Transcriptase	5000	4375
E318		25000	17500
E355	T7 RNA Polymerase	5000	7000
E356		25000	28000
E345	Exonuclease III	5000	3500
E346		25000	14000
E335	Uracil-DNA Glycosylase(UDG)	1000	6125
E336		5000	24500
E333	Tte-inorganic pyrophosphatase	20	1750
E334		100	7000
E315	Tli-inorganic pyrophosphatase	100	1750
E316		500	7000
E323	Endonuclease I	4000	5250
E324		20000	21000

Cat No.	Description	Units	Price
	DNA PREPARATIONS	µg	
D10	DNA phage lambda (dam-, dcm-)	500	8750
D11	DNA phage lambda	500	8750
D02	DNA phage T7	500	8750
D03	DNA pBR322	50	4375
D04		250	17500
D05	DNA pUC19	50	4375
D06		250	17500
D09	pHspAI2/GsaI DNA	10	14000
	HUMAN GENOMIC DNA	µg	
D07	Genomic DNA HeLa	10	5250
D08	Genomic DNA Jurkat	10	5250
D14	Genomic DNA L-68	10	5250
D13	Genomic DNA Raji	10	5250
D12	Genomic DNA U-937	10	5250
	DNA MARKERS	µg	
M01	Lambda DNA/HindIII	100	3150
M02		500	12600
M03	Lambda DNA/Bme18I(AvaII)	100	3150
M04		500	12600
M05	Lambda DNA/BssT1I(StyI)	100	3150
M06		500	12600
M17	Lambda DNA/BglI	100	3150
M18		500	12600
M09	Lambda DNA/BstEII	100	3150
M10		500	12600
M07	pUC19/MspI	50	5250
M08		250	21000
M13	pUC19/Kzo9I	50	5250
M14		250	21000
M19	pBR322/AluI	50	5250
M20		250	21000
M21	pBR322/BsuRI	50	5250
M22		250	21000
M11	1 Kb DNA Ladder	50	1925
M12		250	7700
	DNA MARKERS	µg	Price
M15	100 bp DNA Ladder	50	1925
M16		250	7700
M33	100 bp+50 bp DNA Ladder	50	1925
M34		250	7700
M23	100 bp+1.5 Kb DNA Ladder	50	1925
M24		250	7700
M27	100 bp + 1.5 Kb + 3 Kb DNA Ladder	50	1925

M28		250	7700
M25	100 bp + 2 Kb + 3 Kb DNA Ladder	50	1925
M26		250	7700
M29	50 Kb DNA Ladder	50	1925
M30		250	7700
Cat No.	Description	Units μ l	Price
	NUCLEOTIDES		
N011	dATP, 40mM water solution, 5 μ mol	50	525
N012	25 μ mol	250	2100
N013	dCTP, 40mM water solution, 5 μ mol	50	525
N014	25 μ mol	250	2100
N015	dGTP, 40mM water solution, 5 μ mol	50	525
N016	25 μ mol	250	2100
N017	dTTP, 40mM water solution, 5 μ mol	50	525
N018	25 μ mol	250	2100
N031	dUTP, 40mM water solution, 5 μ mol	50	525
N032	25 μ mol	250	2100
N024	dNTP Mix, 0.5mM solution of each	1000	175
	0.5 μ mol of each		
N026	dNTP Mix, 2.5mM solution of each	1000	875
	2.5 μ mol of each		
N027	dNTP Mix, 4 mM solution of each	1000	1400
	4.0 μ mol of each		
N025	dNTP Mix, 10 mM solution of each	1000	3500
	10.0 μ mol of each		

Authorized Distributor



GEOVISTA

#18 & 19, 3rd Floor, Horamavu Agara Main Road

Bangalore 560043- India, Tel: +91-80-32468095, Fax: +91-80-28443875

E- Mail: contact@geovista.co.in, Web: www.geovista.co.in